

January 18, 2024

Coffee with the Principal

Agenda

- Safety Updates
- Outreach Support Services
 - Ms. Meyer
 - Ms. Espinoza
 - Ms. Gonzalez
- Topic Ideas



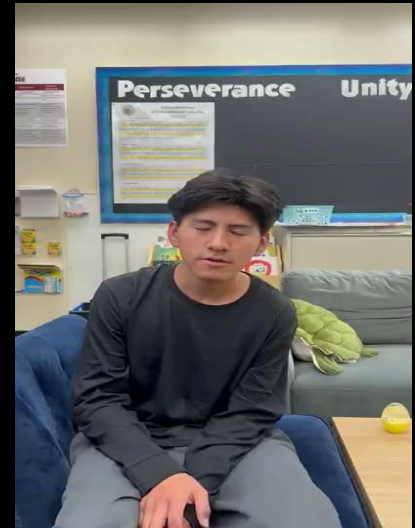
Outreach

Ms. Meyer - Outreach consultant

Ms. Gonzalez - School Family Outreach Assistant

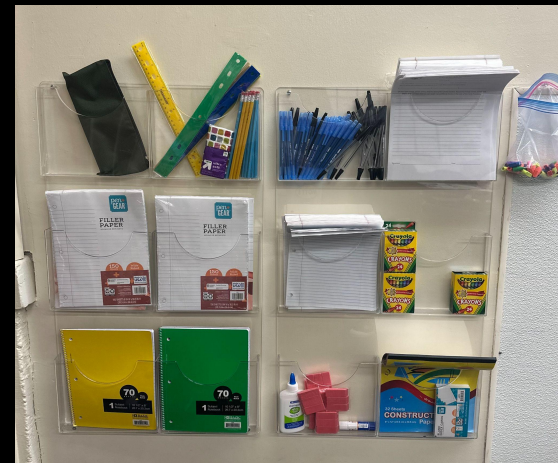
Ms. Espinoza - School Mentor

What is 5A for?





Room 5A



PBIS

Tier 1 Supports and Interventions:

- PBIS Rewards
- Matrices
- Kick Off and Refresher
- SEL & Mindful Minutes

PBIS

Positive Behavior Interventions and Supports

Positive Behavior Interventions and Supports is a framework for creating positive, predictable, and effective school environments that allow students to achieve social and academic goals. It is a 3 tiered research based approach to reduce problem behavior, improve social skills, and make instructional time a priority for all students and teachers.

Check out more information on PBIS by scanning the QR Code below.



 Perseverance  Unity  Respect  Responsibility





School-Wide Support

Student Mentor/Campus Assistant





BOBCAT SHOP is now open!



- Purchase items by going to the **PBIS Rewards App**, clicking on Stores, clicking Bobcat Shop, and selecting items to order.
- Items will be available for pickup on **Friday** in the MPR during lunch recess only.
- See Ms. Espinoza (room 5A) for more information.



Perseverance Unity Respect Responsibility





PLAYGROUND EQUIPMENT MANAGER

Counseling



- 19 Students

Case Management



- 27 Families

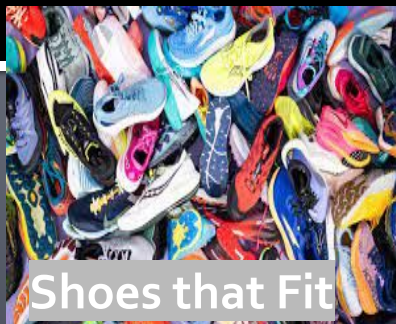
Attendance

ATTENDANCE COUNTS!				
2023-2024 ATTENDANCE AWARDS				
This school year we are excited to be bringing back our attendance awards. These awards will be given to students with Perfect Attendance and Exemplary attendance at our Trimester awards assemblies. Below are the qualifications for these awards and our Saturday Attendance Make-Up Academy (SMUA) days.				
Perfect Attendance	Trimester 1	Trimester 2	Trimester 3	
Days in Trimester	56 Days 8/9/23 - 10/27/23	70 Days 10/30/23 - 03/01/24	54 Days 03/04/24 - 05/23/24	
Absences	0	0	0	
Tardies / Early Outs	0	0	0	
Can I use SMUA? (Saturday Attendance Make-Up Academy)	No	No	No	
Exemplary Attendance	Trimester 1	Trimester 2	Trimester 3	
Days in Trimester	56 Days 8/9/23 - 10/27/23	70 Days 10/30/23 - 03/01/24	54 Days 03/04/24 - 05/23/24	
MAX Absences (These absences are not made-up via Saturday Attendance Make-Up Academy)	1	2	1	
Tardies / Early Outs (Not Saturday Attendance Make-Up Academy eligible)	1	2	1	
Can I use SMUA? (on Absences ONLY)	Yes	Yes	Yes	
SMUA Dates (Saturday Attendance Make-Up Academy)	9/9/23 10/28/23	9/30/23 03/2/24	12/9/23 03/2/24	3/16/24 4/13/24
If you have questions please contact the Outreach Office brandee.meyer@dmad.net breauna.gonzales@dmad.net (909) 984-5618				

Outreach Programs

- 55 students and their families are currently participating in one or more of these programs.

Love For Humanity



Qualifications for Programs

- Student may need to be Considered Student in Transition (SIT)
 - Students in Transitions
 - Homeless, Living in Hotel/Motel, more than one family in one house
- Low Income
- When are programs
 - Beginning of the year: Operation School Bell, Love for Humanity
 - Holiday Time: Spark of Love, Giving Tree
 - All Year: Shoes that fit, Bus/Gas Card, Van Services, Basic Needs

Future Topics...

- Safety
- LCAP (required)
- Other Ideas...



Next Coffee with Principal

Thursday, February 8th
8:30 a.m.

